

# BWL

## 8CH 1080P HDMI POE NVR 1080P POE Camera System



- POE System**  
Power Over Ethernet
- Remote Access**  
Get live video via quick QR-code scan
- Remote Access**  
never miss any important thing with alert notification
- Waterproof**  
professional IP66 waterproof for indoor and outdoor
- HD 1080P**  
1080P HD video  
HDMI or VGA HD output
- Day / Night**  
True 24 / 7 Monitoring
- H.264 HD**  
H.264 compression scheme
- Schedule Recording**  
Customize your recording time to save disk space

### HD Comparison Among 720P, 960P and 1080P

1080P is more clear and better display than 720P or 960P

8



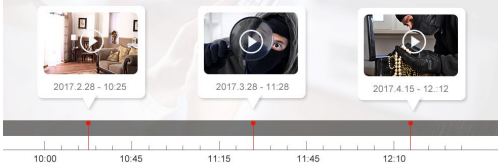
### ④ Motion Detection and Instant Email Alerts

Once some intrude the surveillance area, the camera would alarm and send real-time snapshot to your App or Emails right now.



### ⑤ Locate Incident Video With Smart Playback

It effectively economized your time in playing back the vide. Incident videoclips can be found and marked in no time with smart playback-function so you get the chance to go directly to incident video clips while skipping others.



## Product feature

### ① POE power supply function

Only need a network cable, transmission data signal at the same time, but also for the equipment to provide DC power supply technology

#### POE Power Way

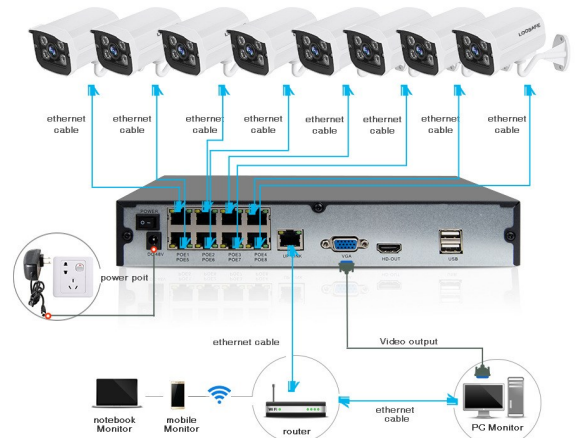
The POE camera would be powered by Poe NVR via Ethernet lines, no camera power adapter needed.



## Power Over Ethernet

All POE cameras is built-in POE can no need independent power supply. You can install the cameras anywhere without power's limits.

Note: This package does not include a network cable and needs to be purchased separately



Kits	Model Type	POE NVR KIT
	Model No	BWL-SEC/BCH/POE/KIT
	Lens	4mm
	Sensor	1/3 CMOS
	S/N Ratio	>48db
	Image Pixel/Resolution	1920 X 1080
	Image Compression	H.264
	View Angle	75.7°
	Infrared Distance	30m
	Mini Illumination	0 Lux (IR-Cut)
	Day & Night	Automatic IR-Cut
	3D -DNR	Auto/BW/Colour
	OSD	Date Time/Tilt
	White Balance	Auto
	Stream	Dual Stream:1920 X 1080@25fps
	Internet Interface	1 X RJ45 Ethernet Interface,802.11b/g/n
	Power	12V DC/2A (Output),100-240V AC(Input),50-60HZ
Camera	Materials	Aluminium Alloy
	Waterproof	IP66
	Size	L95 X W65 X H65MM
	Model No	LS-7504POE
	System	Embedded Linux
	Video Input	8ch X 1080p
	Video Output	1 X VGA,1 X HDMI
	Video Compression	H.264
	Synch-playback	1ch X 1080P
	Backups	Manual
NVR	Storage	1TB SATA
	Internet Interface	5*RJ45 10M/100M,4*RJ45 support POE IEEE802.3af/at
	USB Interface	2 X USB2.0
	Onvif Protocol	Yes
	Internet Protocol	Upnp,SMTP,PPPoE.DHCP
	Power	48V/2.5A
	Power Consumption	10W
	Operation Temperature	0 deg to 55 deg
	Size	L260 X 215 X 50MM